

# TALKIN' TESTING

ASSESSMENT & SYSTEM PERFORMANCE | MAY, 2021

## SPRING STANDARDIZED TESTING WINDOWS CLOSING

It's been a remarkable school year and our students and staff have shown great resilience. Thank you for your attention to their needs while using every ounce of your energy to guide, support, and care for others.

Our standardized assessment windows close soon - and we're in our final stretch to demonstrate student growth since the fall. Here are our spring windows and deadlines:

- **ISAT by Smarter-Balanced** (ELA/Math; grades 03-08, 10): Open through May 28th at 4:00PM;
- **ISAT Science** (Science; grades 05/08/11): Open through May 28th at 4:00PM;
- **Idaho Reading Indicator by IStation** (Reading; grades KG-05): Open through May 28th at 4:00PM;
- **Civics Assessment** (Civics; grades 07-12): Open through Memorial Day, May 31st (remote assessment available) at 4:00PM;
- **i-Ready Mathematics** (Math; grades KG-08 excluding Math 1): Open through Memorial Day, May 31st (remote assessment available during school hours);
- **Illuminate FastBridge** (English language arts for grades 06-12 excluding AP/dual credit and mathematics for high school coursework): Open through Memorial Day, May 31st (remote assessment available during school hours).

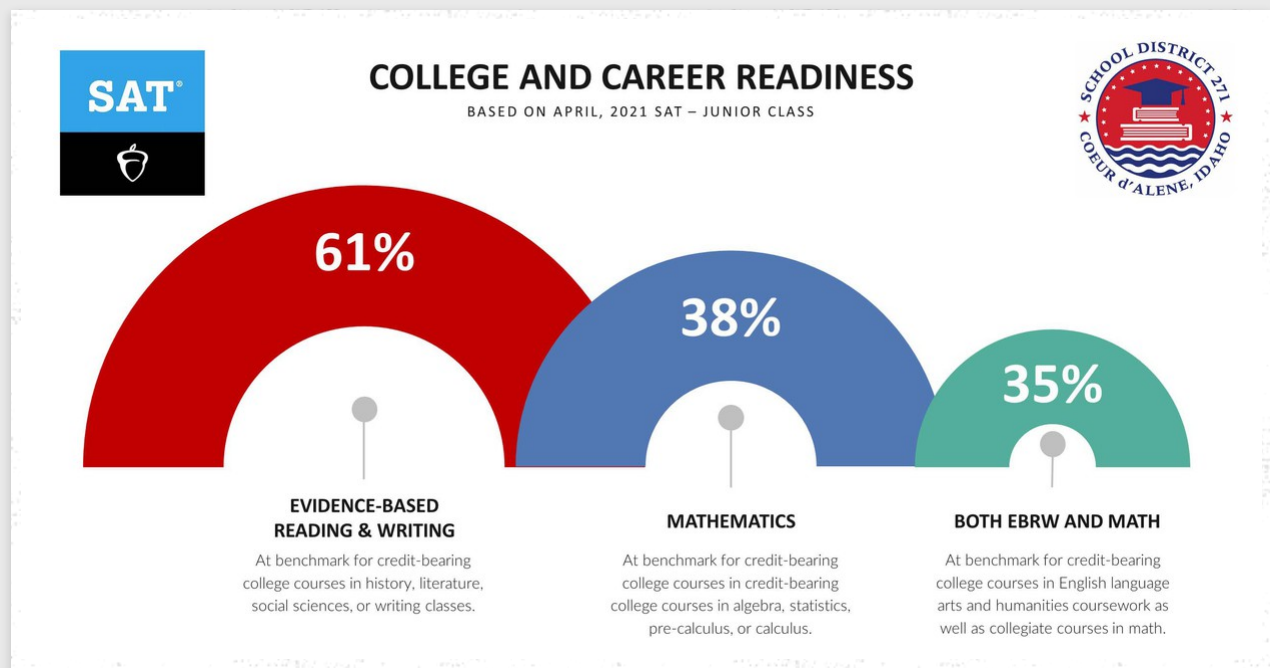
You can track progress toward our 100% completion goal for [spring assessments](#) and [ISAT](#) in the links provided. Because of reporting requirements, we are unable to provide an extension to these windows.





# INFOGRAPHIC OF THE MONTH

For every PSAT/SAT exam taken, the district is able to look at the percentage of students who are at/above the [college and career-readiness benchmark](#), a level at which a student has a high probability of success of passing collegiate level coursework. The graphs below show results for the current Juniors who recently took the SAT in April:



## TESTING REPORTS TO BE PRINTED IN BUILDINGS

We are required by state statute to provide assessment reports to students/parents/guardians within 30 days of receipt. However, with the quick turnaround time, the end of the school year, and short-staffing at the district's Print Shop, we are asking that student score reports be printed by office staff. Once windows close, Mike will be reaching out and assisting our teams to ensure that documents are printed/posted and distributed as quickly as possible.

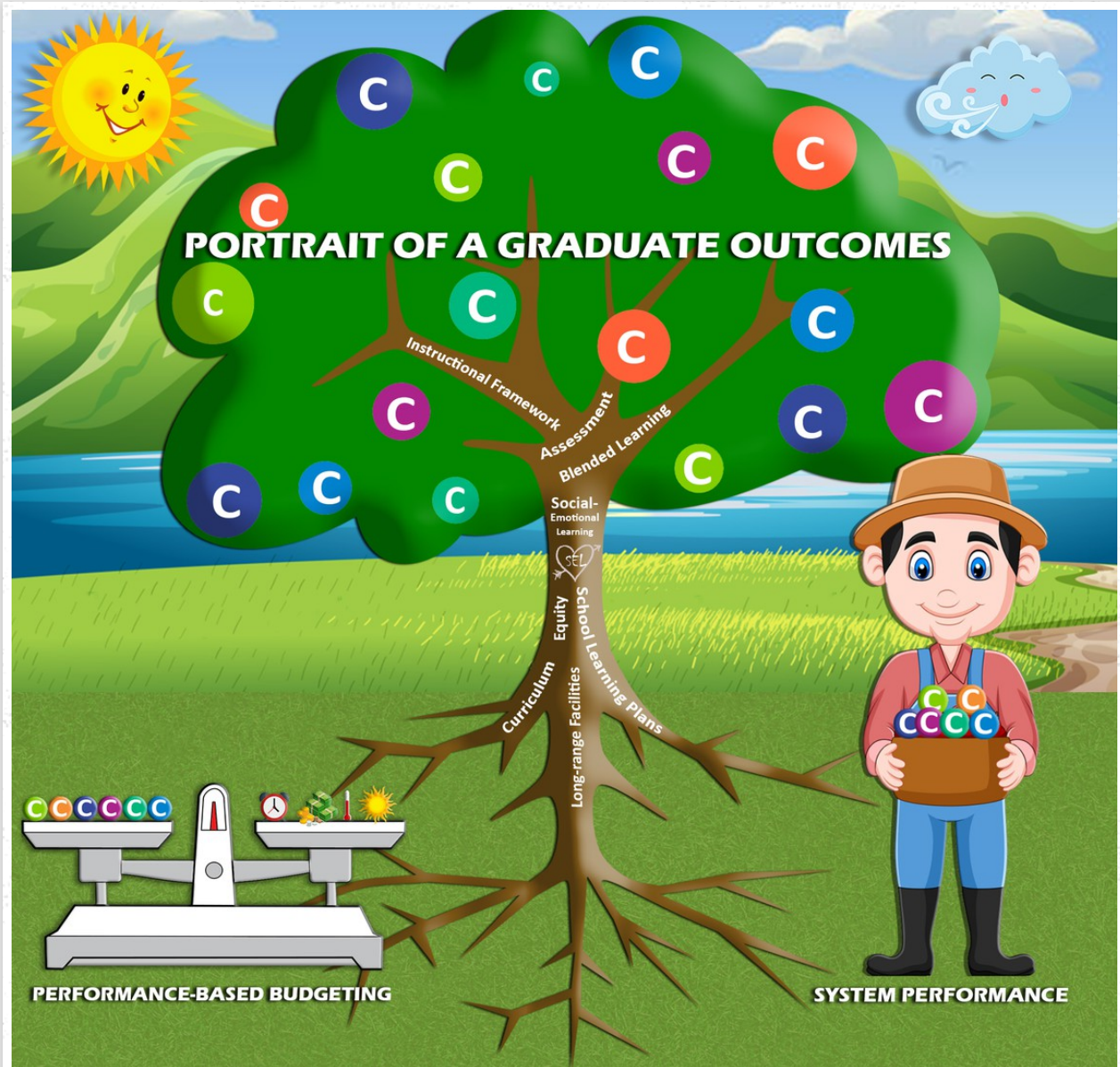


Our district will also send emails to parents/guardians with interpretation guidance a few days after the expected delivery.

## SYSTEM PERFORMANCE FRAMEWORK OUT FOR REVIEW



Our draft [System Performance Framework](#) was presented to the Board of Trustees on May 3rd and is out for a 30-day public review. If approved, the framework would reinforce consistency in decision-making throughout the district to ensure that monies, time, and energy are given to those initiatives which provide a documented return-on-investment. We hope that you will review the proposal and provide your feedback to our [Clerk of the Board, Lynn Towne](#) before it is considered for adoption at the June 7th meeting of our trustees.



Our System Performance Framework attempts to connect the dots between the [Portrait of a Graduate](#) outcomes (communication, collaboration, creativity, character, content knowledge, and critical thinking - each in their color on the wheel), the supports of our [strategic plan](#) components, system performance, and performance-based budgeting.

Metaphorically, system performance is the process to get the best "fruit" from our work and ultimately, provide more resources for what is working rather than what we've always done.

Thanks to the genius of Jon Mahn in our communications department for his design.

# POTENTIAL CHANGES TO ELEMENTARY STANDARDS REPORT CARDS

A small group of teachers, administrators, and support staff is reviewing our current elementary standards-based report cards for potential revision. Last updated in 2017, there have been multiple changes in curriculum, state standards, and assessments that have not been reflected in the current templates. Additionally, our team is [looking at the purpose behind our report cards and how we can best transmit student growth](#) to parents/guardians and the students themselves. We hope to have drafts of changes before the end of the school year.

If you have interest in joining our review team, please reach out to [testing@cdaschools.org](mailto:testing@cdaschools.org). Meetings are held virtually through Schoology and will not require out-of-classroom discussion.



## BILL OF RIGHTS

Decisions around assessments are grounded in our [Student Assessment Bill of Rights](#) which ensures that students understand why we choose to assess and how the results will be used.



## COMING THIS FALL

Our district will be continuing to follow the goals of our [Comprehensive Assessment Plan](#) with greater emphasis in 2021-2022 on common formative assessments and introducing P.E.A.K. Projects.

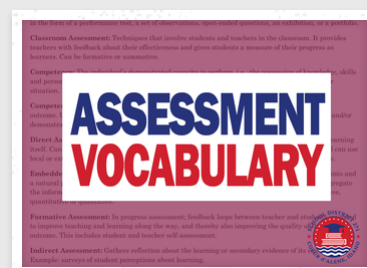


## ABOUT ASSESSMENT

Which assessments will be given next year and what will they measure? You can see everything in our [District Assessment Practices](#) overview.

## HOW'S YOUR ASSESSMENT VOCABULARY?

Educators are notorious for using acronyms and jargon in their work. Just think about how many I-leading acronyms there are in the assessment world! To help, we've provided a [list of vocabulary words and definitions](#) on the district website under Departments > Assessments.





# THANK YOU

COEUR D'ALENE PUBLIC SCHOOLS  
FACULTY & STAFF



## ENJOY A RESTFUL SUMMER BREAK.



### CONTACT US

@cdaguyinbowtie

Our team is very willing to support you at any time. Reach out as you may need support.

1400 North Northwood Center ...  
10006

testing@cdaschools.org  
my.cdaschools.org